



BSK16 CAFFEINE 10% BIO-REDUCING SOLUTION



WHAT IT IS?

Sterile cosmeceutical solution of caffeine, indicated for the treatment of visible symptoms of localized cellulitis.

It acts on oxidation of fatty acids indirectly, after the elimination of excess glucose, with a pronounced lipolytic effect on cellulite and localized fat deposits.

HOW TO USE

Body product. Apply on the area to be treated, giving a light massage until product complete absorption. Suitable for cosmetic treatments and virtual mesotherapy.



PRESENTATION

10 Amp. x 5ml / 0.175 Fl. Oz.

USE

Body product

INGREDIENTS

- Caffeine
- Sodium Benzoate
- Sodium Chloride

ACTION

- Lipolytic
- Reducing

STEP BY STEP

1

SKIN PREPARATION

- Cleanse the skin of the treatment area
- Exfoliate dead skin cells to enhance skin permeability, preferably with a soft mechanical peel/abrasion
- Cleanse the area again and disinfect the skin

2

ANALYSIS & MIXTURE

Analyse the patients skin according to their treatment objectives and select the appropriate solution.

3

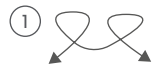
APPLY INGREDIENT SOLUTIONS

Drop the solution with a dropper or a syringe directly onto the skin of the Meso Pen/Dermal Roller treatment area, see diagrams. If your No Needle Mesotherapy/Transdermal Delivery System uses a conductive gel, mix the solution with it.

4

TREATMENT WITH MESO PENS

- A · Ensure the Pen is plugged in or charged and insert a sterile needle head into its tip
- B · Configure the Meso Pen speed and depth settings in accordance with the area and the condition being treated
- C · Gently hold the skin of the treatment area to make it taught, whilst, with your Pen:



Make small circles
from left to right



Work from top
to bottom

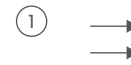


Work diagonally

Exert gentle but constant pressure with the Pen
Continue to drop the solution on the treatment area as you proceed

TREATMENT WITH DERMAL ROLLERS

- A · Choose the appropriate Dermal Roller needle length in accordance with the area and the condition being treated
- B · Ensure the Meso Roller is disinfected and sterile
Gently hold the skin of the treatment area to make it taught, whilst, with your
- C · Roller:



Roll from left to right



Roll from top
to bottom



Roll diagonally

Exert gentle but constant pressure with the Roller
Continue to drop solution on the treatment area as you proceed

TREATMENT WITH NO NEEDLE MESOTHERAPY / TRANSDERMAL DELIVERY SYSTEMS

Follow the directions given by your device manufacturer.
With some systems, the solution is mixed with a conductive gel, with others, dropped onto the skin during treatment.

5

POST TREATMENT PROCEDURE & RECOMMENDATIONS

It can be beneficial to not wash the skin after treatment unless using a conductive gel.
It can be beneficial to avoid applying cosmetics, other than sun block, and also to avoid prolonged sun exposure or up to seven days.
Keep good clinical records of patient and treatment details and observations, including solutions used.

BSK16 · CAFFEINE 10% BIO-REDUCING SOLUTION



PRODUCT IMAGE



Preserve below 25°C. Keep out of children's reach. Avoid contact with eyes and mucous membranes. Suspend its use if there is allergy, sensitivity or hypersensitivity to the product.

Cosmetic product. External use. Not injectable.



Gran Via Carles III 98 Torre Norte, Planta 10ª
08028 Barcelona - Spain
info@bioskincosmetic.com
www.bioskincosmetic.com

Recommended
volume (ml) per area

Recommended
depth per area

